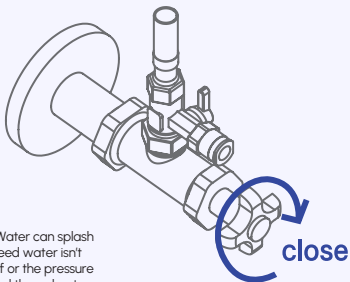




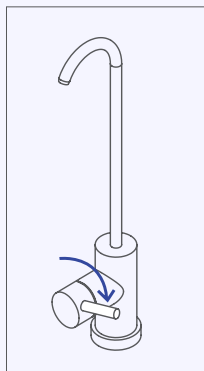
KF10 / KF17

KlearFlow Cartridge Replacement Guide

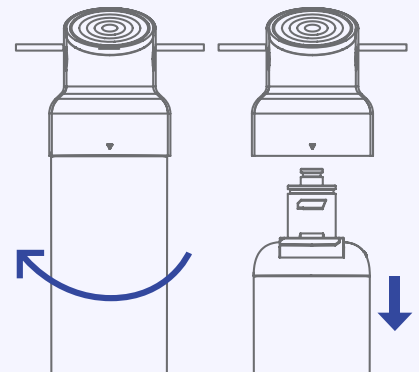
1. Shut off the feed water. Open a nearby tap to release pressure.



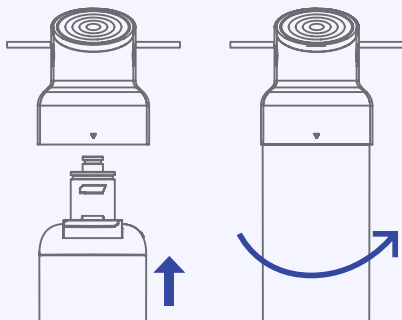
Note: Water can splash if the feed water isn't shut off or the pressure isn't bled through a tap.



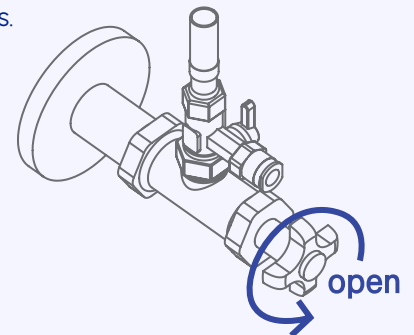
2. Remove the old filter. Twist anticlockwise and pull down.



3. Fit the new filter. Insert into the manifold and twist 90° clockwise to lock.



4. Turn water back on. Flush the new filter for 10 minutes before use. Check for leaks.



Product Code	KF10	KF17
Filter Details	Composite Filter: Carbon Block, Ceramic ball	Composite Filter: Carbon Block, Ceramic ball
Housing Size	10"	17"
Max. Flow Rate	8 LPM	9.5 LPM
Working Pressure	10~125psi (0.7~8.7kgf/cm) 2	10~125psi (0.7~8.7kgf/cm) 2
Rated capacity	35,000 Litres (12 months)	75,000 Litres (24 months)
Operating Temp.	4 ~ 37° C	4 ~ 37° C

Scan here for warranty registration

